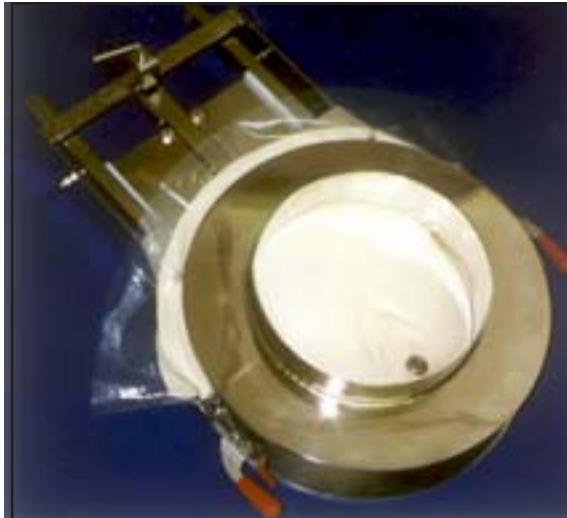


PROCESS LINK LTD,  
Tilemans Lane, Shipston-on-Stour,  
Warwickshire, CV36 4QZ, ENGLAND.

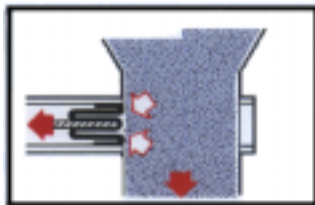
Tel: (01608) 662878  
Fax: (01608) 662968  
Email: info@processlink.co.uk  
Website: www.processlink.co.uk



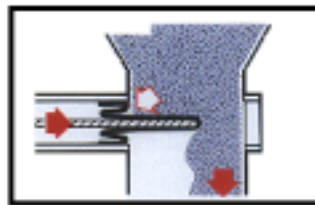
## DUST TIGHT CASSETTE MEMBRANE VALVE S0320



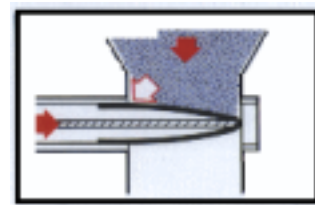
### **THE ULTIMATE SLIDE VALVE FOR RAPID CLEANING DURING PRODUCT CHANGES**



Dust tight in operation



Regulated control



Positive shut-off

- ✓ *EASY REMOVAL FROM PROCESS FOR CLEANDOWN:-*
- ✓ *JUST RELEASE TOGGLE CLAMPS, THEN REMOVE CASSETTE VALVE FOR CLEANDOWN.*
- ✓ *REMOVE DISPOSABLE MEMBRANE AND FIT CLEAN ONE READY FOR NEXT BATCH.*
- ✓ *ENSURES NO CROSS CONTAMINATION BETWEEN BATCHES*
- ✓ *IDEAL WHERE HYGIENE BETWEEN BATCHES IS PARAMOUNT*
- ✓ *PREVENTS POWDER LEAKAGE TO ATMOSPHERE AND JAMMING*
- ✓ *DESIGNED FOR POWDER, GRANULES, PAINTS/DYES, ETC*
- ✓ *CUSTOM BUILT TO SUIT*

